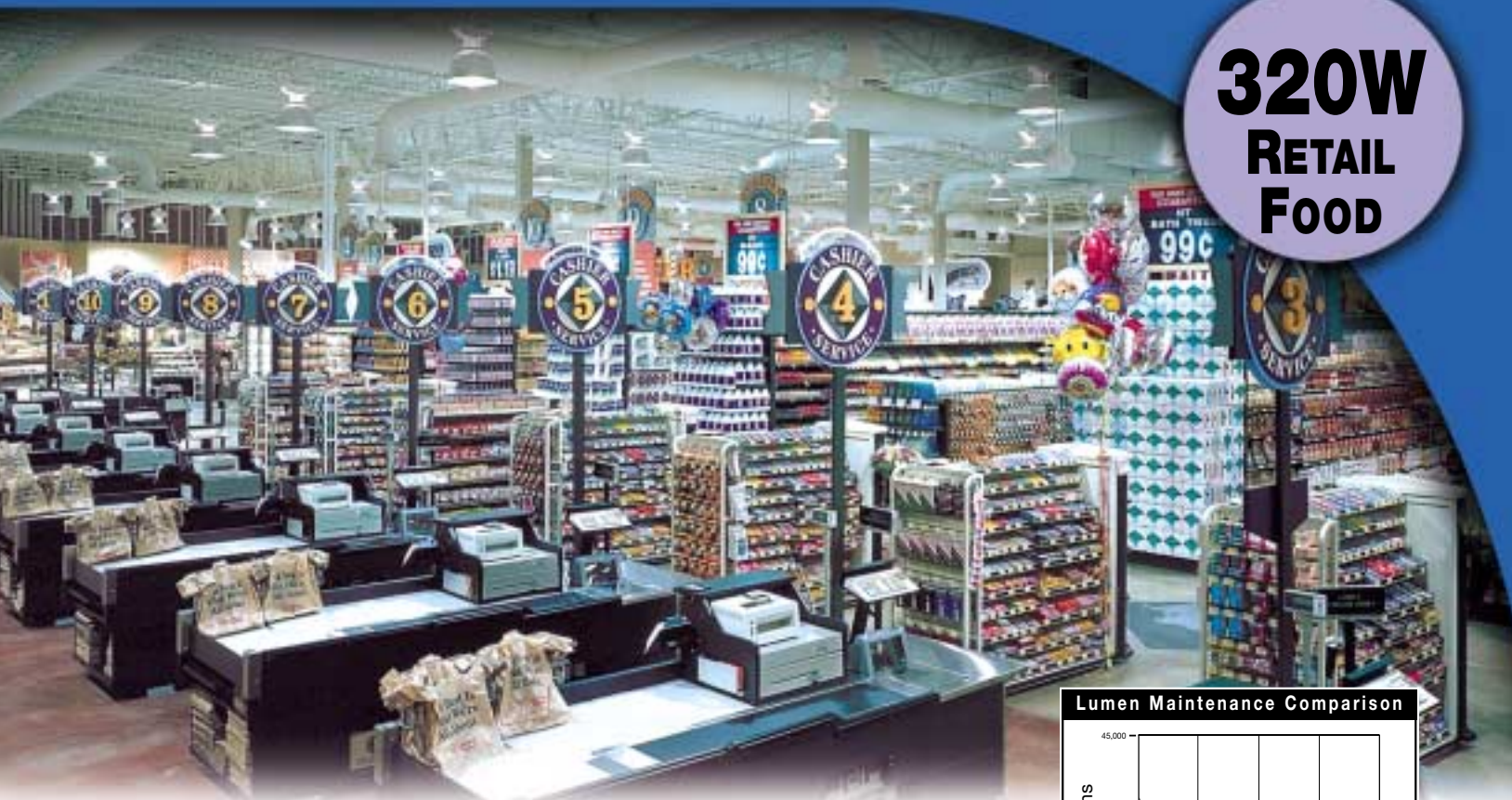


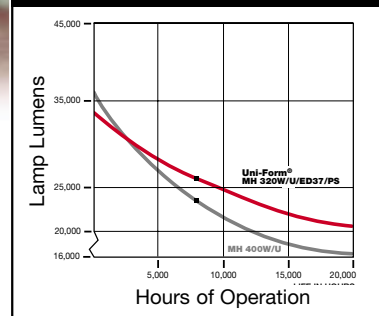
**320W  
RETAIL  
FOOD**



## The Clear Choice for Food Retail

Why settle for a 400 watt universal lamp when a Uni-Form<sup>®</sup> 320 watt pulse start lamp gives you more and better light for less energy? Using a Venture<sup>®</sup> Uni-Form Power Saver ballast helps save you money, too, by using 35 fewer watts - for an amazing total energy savings of 115 watts per luminaire! Venture's open-rated lamps provide superior protection for customers and merchandise in open fixtures.

Lumen Maintenance Comparison



Enclosed and Open Rated



### Benefits

- Available in open and enclosed versions with 4K color temperatures in ED28 and ED37 sizes
- Up to 20% higher mean lumens than standard 400 watt lamp means more light for the same number of fixtures
- Long life: 20,000+ hours
- Improved color uniformity vs. standard 400 watt
- Open and enclosed ED28 and ED37 versions available
- UV Shield<sup>®</sup>, available on shrouded lamps, provides merchandise protection
- Optimized lamp/ballast system for superior performance and One Call Warranty



**VENTURE<sup>®</sup>  
LIGHTING**

An Advanced Lighting Technologies Company

**Lamps • Ballasts • Controls**

# 320 Watt Technical Data

## Enclosed Rated Mogul Base Lamps

Lamp Description	Product No.	ANSI Spec	Initial Lumens	Lumens Per Watt	Mean Lumens	Avg. Life Hours <sup>(1)</sup>	CCT (K)	Warm-Up (Min)	Restrike (Min)	CRI	Finish	Oper. Pos.	Fig.	Case Qty
MH 320W/U/ED28/PS	55352	M132	33000V/29700H	103V/93H	26400V/23800H	20000+V/15000H	3500	2-3	4-6	65	Clear	U	A	12
MH 320W/C/U/ED28/PS	61117	M132	31000V/27900H	97V/87H	24800V/22300H	20000+V/15000H	3200	2-3	4-6	70	Coated	U	A	12
MS 320W/BU/ED28/PS	22564	M132	34000	106	27200	20000+	4000	2-3	4-6	65	Clear	BU±15°	A	12
MS 320W/C/BU/ED28/PS	22563	M132	32300	101	25800	20000+	3700	2-3	4-6	70	Coated	BU±15°	A	12
MH 320W/U/ED37/PS	51988	M132	33000V/29700H	103V/93H	26400V/23800H	20000+V/15000H	3500	2-3	4-6	65	Clear	U	C	6
MH 320W/C/U/ED37/PS	85424	M132	31000V/27900H	97V/87H	24800V/22300H	20000+V/15000H	3200	2-3	4-6	70	Coated	U	C	6

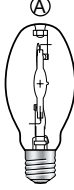
## Open Rated Mogul Base Lamps

Lamp Description	Product No.	ANSI Spec	Initial Lumens	Lumens Per Watt	Mean Lumens	Avg. Life Hours <sup>(1)</sup>	CCT (K)	Warm-Up (Min)	Restrike (Min)	CRI	Finish	Oper. Pos.	Fig.	Case Qty
MP 320W/BU/ED28/PS	10103	M132	32300	101	25800	20000+	4000	2-3	5-8	65	Clear	BU±15°	B	12
MP 320W/C/BU/ED28/PS	10104	M132	30600	96	24500	20000+	3700	2-3	5-8	70	Coated	BU±15°	B	12
MP 320W/BU/ED37/PS	21714	M132	32300	101	25800	20000+	4000	2-3	5-8	65	Clear	BU±15°	D	6
MP 320W/C/BU/ED37/PS	32795	M132	30600	96	24500	20000+	3700	2-3	5-8	70	Coated	BU±15°	D	6

## UV Shield Low UV Open Rated Lamps

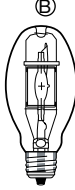
Lamp Description	Product No.	ANSI Spec	Initial Lumens	Lumens Per Watt	Mean Lumens	Avg. Life Hours <sup>(1)</sup>	CCT (K)	Warm-Up (Min)	Restrike (Min)	CRI	Finish	Oper. Pos.	Fig.	Case Qty
MP 320W/BU/ED28/UVS/PS	27637	M132	32300	101	25800	20000+	4000	2-3	5-8	65	Clear	BU±15°	B	12
MP 320W/C/BU/ED28/UVS/PS	26891	M132	30600	96	24500	20000+	3700	2-3	5-8	70	Coated	BU±15°	B	12

Lamps



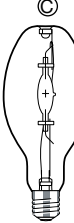
**ED28**

Dia. = 3 1/2" (90mm)  
MOL = 8 5/8" (211mm)  
LCL = 5" (127mm)  
Base = E39



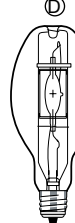
**ED28**

Dia. = 3 1/2" (90mm)  
MOL = 8 5/8" (211mm)  
LCL = 5" (127mm)  
Base = EX39



**ED37**

Dia. = 4 5/8" (120mm)  
MOL = 11 1/2" (292mm)  
LCL = 7" (178mm)  
Base = E39



**ED37**

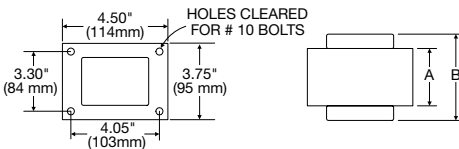
Dia. = 4 5/8" (120mm)  
MOL = 11 1/2" (292mm)  
LCL = 7" (178mm)  
Base = EX39

## Ballasts, 60Hz ANSI Code M132 320W

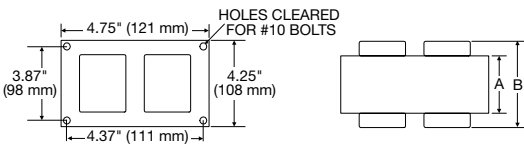
Input Voltage	Product No.	Circuit Type	Input Watts	Max. Line Current	UL Coil Rise Code	Crest Factor	Fig.	Dimensions A (in)	Dimensions B (in)	Total Wt. (lbs)	Capacitor (µfd/Vmin)	Cap. Type
277	V90U7421 <sup>ESB</sup>	Reactor	349	1.7	A	1.5	1	1.5	3.6	7.0	16/280	Dry
120/208/240/277	V90D7411	CWA	368	3.2/1.8/1.6/1.4	B/B/B/B	1.6	2	1.85	3.65	10	22.0/330	Dry
120/277/347	V90J7411	CWA	368	3.2/1.4/1.15	B/C/C	1.6	2	1.9	3.75	10	22.0/330	Dry
480/120T	V90Y7411T	CWA	368	0.8	D	1.6	2	1.9	3.75	10	22.0/330	Dry

Ballasts

① Reactor- 3/4 x 4 1/2 Core



② CWA- 4x4 Core



ESB = Energy Saving Ballast

## Quartz Re-Strike Controls

Venture offers Solid State Triac (ET) and Hybrid (ALCH) universal quartz restrike controls for all lamp wattages.

**(800) 451-2606 or (440) 248-3510**

Fax (440) 349-7771  
32000 Aurora Road  
Solon, Ohio 44139 USA  
www.venturelighting.com



An Advanced Lighting Technologies Company

**Lamps • Ballasts • Controls**